

“Connecting Your Port to the Freight Network”

*a case study on the Port of Pascagoula's
rail improvement project*

American Association of Port Authorities
104th Annual Convention
November 4, 2015
by
Mark McAndrews
Port Director
Port of Pascagoula



“The availability of a more efficient means to rail cargo from inland Mississippi into the Port of Pascagoula opens significant export opportunities for the region and the state; thus creating additional jobs, new revenue and a stronger economy.”



PORT OF
PASCAGOULA

Mississippi's Largest Port



● **Bayou Casotte Harbor looking South** ●



• Pascagoula River Harbor looking North •



PRIMARY RAIL PARTNERS FOR THE PROJECT

CSX
Transportation



Mississippi Export
Railroad



**Wood Pellet
Manufacturing Plant**

Port of Pascagoula

Transportation Investment Generating Economic Recovery (TIGER)

To fund surface transportation projects (road, rail, transit and port) that have a significant impact on the nation, a region or metropolitan area.

TIGER GRANT PROGRAM

“highly competitive”

- **585 project applications** were received totaling **\$9 billion**
- **52 projects selected** for the award of **\$474 million**



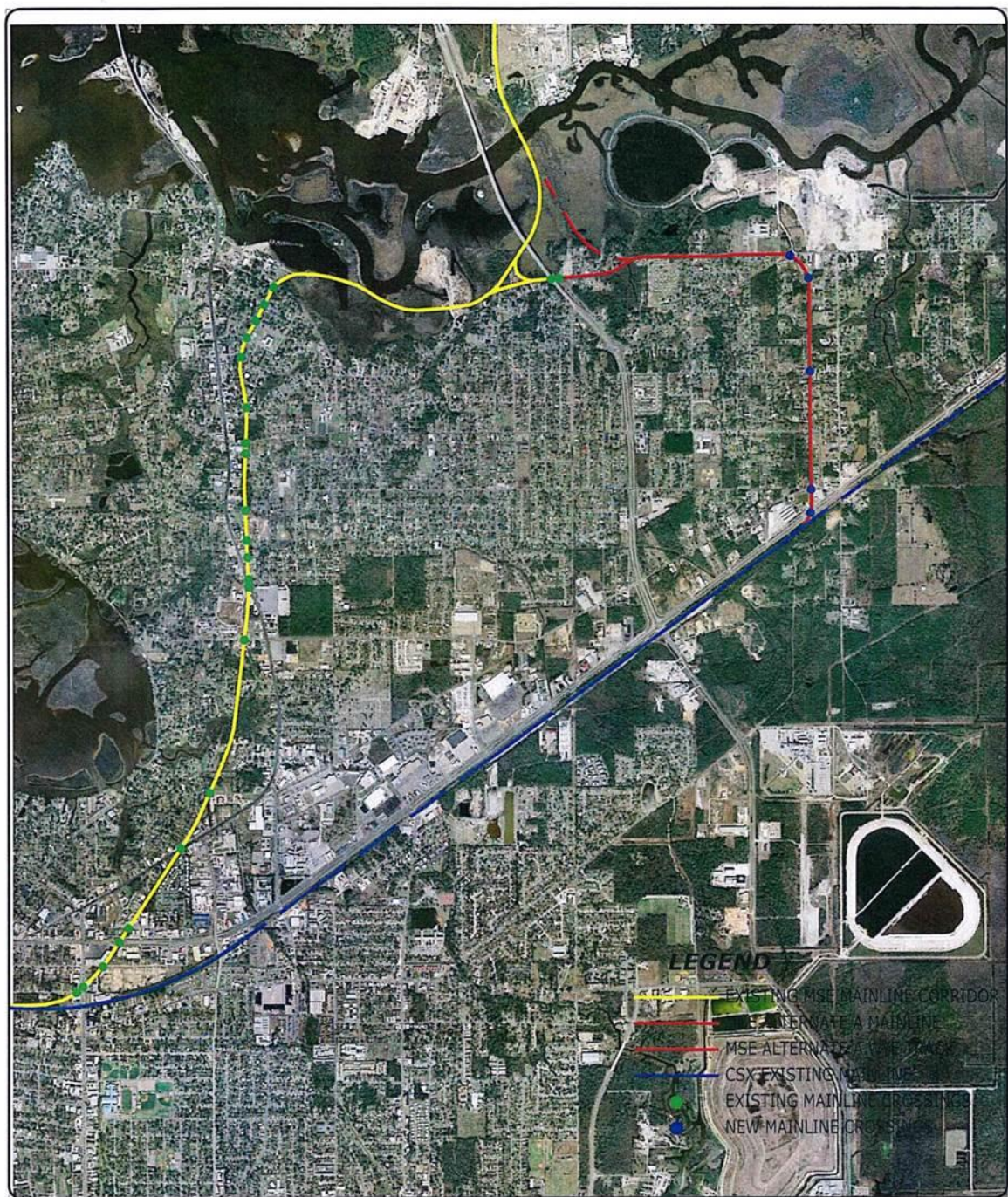
**PORT OF
PASCAGOULA**

Mississippi's Largest Port

Yellow - MSE Main

Red - MSE Alternate

Blue - CSX Main



COMPTON ENGINEERING, INC.

Components of the Project

- Reroute approximately 2.5 miles of track through the city of Moss Point
- Close net of 16 crossings
- Relocate the MSE/CSX interchange - construct a new 5,400 ft +/- interchange yard along the CSX line
- Lay approximately 6,200 ft of additional track within the Port's Bayou Casotte Harbor



**PORT OF
PASCAGOULA**

Mississippi's Largest Port

Benefits of Project

- Safety – closure of 22 crossings and construct 6 new state of the art signalized crossings (net closure of 16 crossings).
- Alleviates automobile traffic congestion in downtown Pascagoula
- Provides a more direct N/S route into the port
- Allows for port to receive and accommodate 65-70 car unit trains
- Improves marketability of the Moss Point Industrial and Technology Park



**PORT OF
PASCAGOULA**

Mississippi's Largest Port



Bayou Casotte Harbor



Lessons Learned

- Fully investigate the requirements of the project when estimating costs (a couple of items we overlooked):
 - a fiber optic line that has to be relocated
 - a chemical pipeline crossing our track
- Don't underestimate the time necessary to reach agreements with the other parties
- Make sure you have a good handle on the scope of the project to properly estimate the cost of the project



**PORT OF
PASCAGOULA**

Mississippi's Largest Port

Best Practices

- Develop relationships with inland transportation providers and determine strengths and weaknesses
- Collectively work to see if there are alternatives for improving the status quo
- Stay abreast of funding opportunities that are available for transportation projects



PORT OF
PASCAGOULA

Mississippi's Largest Port